

SAP BusinessObjects BI4.1 SP03

What's new

March 2014



What's New in BI 4.1 SP03

- **New Web Intelligence features**
 - Input controls
 - Chart enhancements
 - Applet performance
- **Crystal Reports**
 - Prompt Reordering
- **New platform features**
 - Ability to terminate session
 - Direct link to Folder
- **Visualisations**
 - Input controls
- **Right to Left support, including Hebrew**
- **Platform Support**
 - Support for SharePoint 2013



Web Intelligence

BI4.1 SP03, What's New

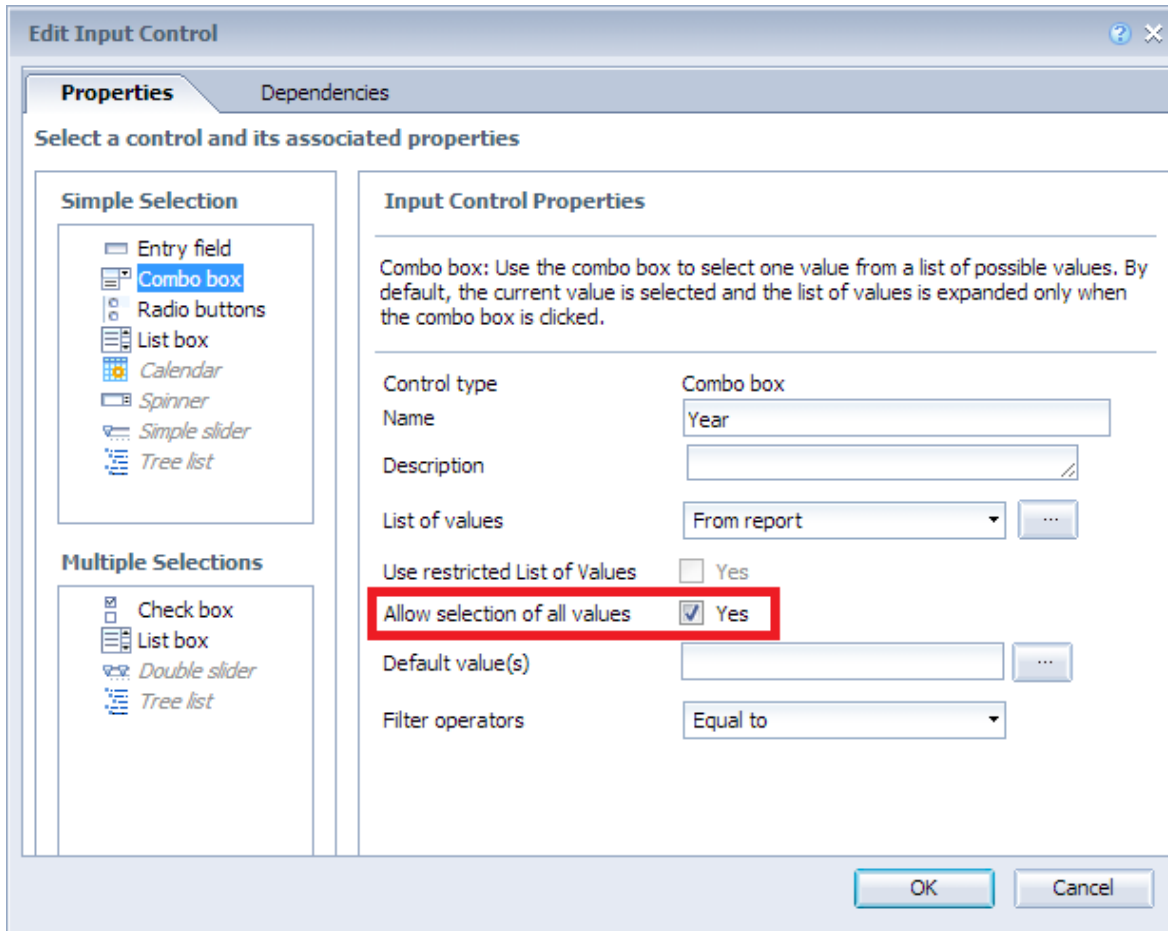
What's New in Web Intelligence 4.1 SP03

- **Support for HANA variables and input parameters**
 - HANA variables are mapped to WebI query prompts
- **Input controls**
 - Hide the "All Values" option
 - Duplicating a report duplicates the associated input controls
- **Web Intelligence chart enhancements**
- **Faster Web Intelligence applet loading performance**
- **Right to Left support, including Hebrew**
- **Support for SharePoint 2013**

Input Controls

- **Report designers can choose to hide the "All Values" option displayed in Input Controls.**
 - Customer Connection requirement
 - Disabling the "All Values" option can be convenient when it doesn't make sense with a customized LOV or if there would be too much data to display at once
- **Duplicating a report duplicates the associated input controls**

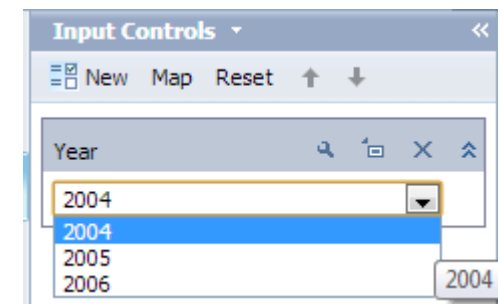
Hide “All values” option



New Input Control property

When OFF, defining a default value becomes mandatory then

Default value is ON - value for existing documents is ON



Hide “All values” option : Scope of relevant Input Controls

Choose Control Type

Select a control and its associated properties

Simple Selection

- Entry field
- Combo box**
- Radio buttons
- List box

Calendar

Spinner

Simple slider

Tree list

Multiple Selections

- Check box**
- List box**

Double slider

Tree list

Input Control Properties

Combo box: Use the combo box to select one value from a list of possible values. By default, the current value is selected and the list of values is expanded only when the combo box is clicked.

Control type: Combo box

Name: Quarter

Description:

List of values: From report

Use restricted List of Values: Yes

Allow selection of all values: Yes

Default value(s):

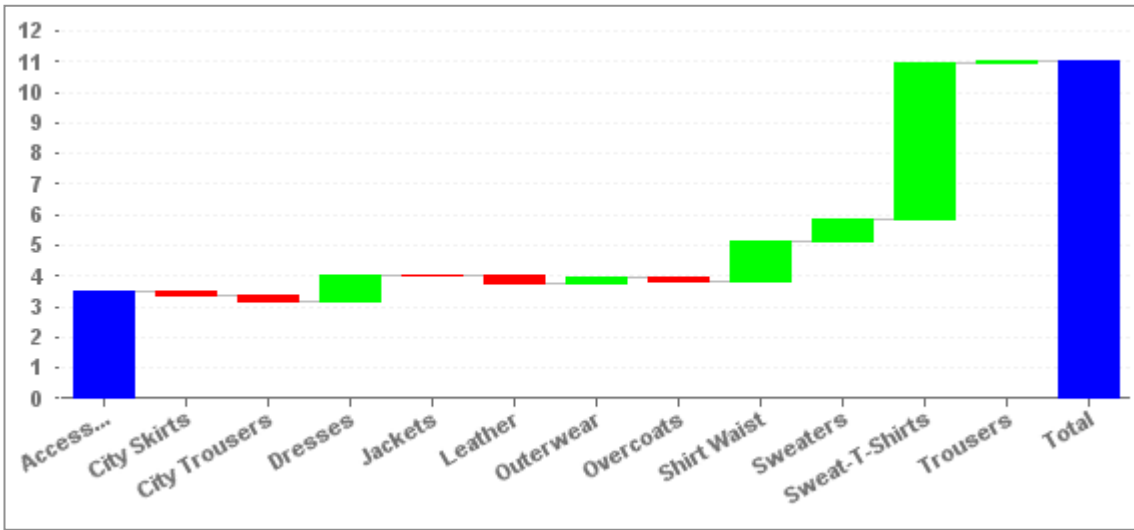
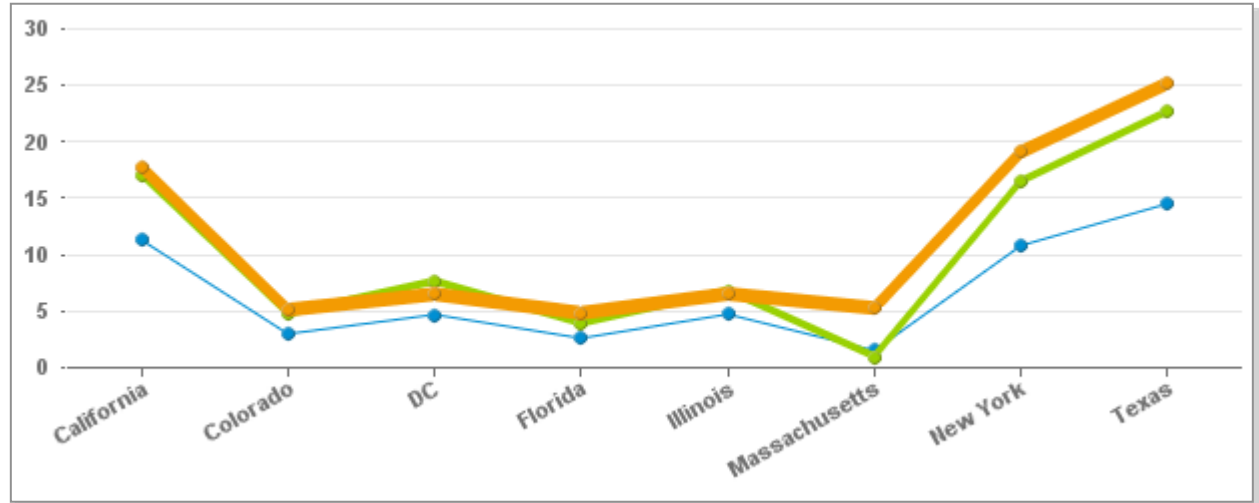
Filter operators: Equal to

Not Applicable to :

- *Measures*
- *Hierarchies*
- *Entry Field*
- *Calendar*

WebI Charts Enhancements

Line charts can now display different line widths



Waterfall charts can now display reference lines between columns or bars

Defining Web Document Content Alignment in the CMC

Administrators can now define in the CMC the default content alignment for newly created Web documents

Properties: Web Intelligence

Hide Navigation

Properties
User Security

Automatic Refresh

Automatic refresh when needed (#TOREFRESH not displayed on reports)

Auto-Merge

Automatic merge when needed

Automatic Document Refresh on Open Security Right Setting

Check the "Disable Automatic Refresh on Open for all documents" security right

Smart View

View Latest Instance

View Object

Content Alignment for New Documents

Choose the way document content will be aligned when users create a Web Intelligence document:

Right-to-Left only when both the Preferred viewing and Product locales are set to Right-to-Left languages

Right-to-Left or Left-to-Right depending on the user's Preferred viewing locale

Always Right-to-Left

Always Left-to-Right

Save Save & Close Reset Cancel



Crystal Reports

BI4.1 SP03, What's New

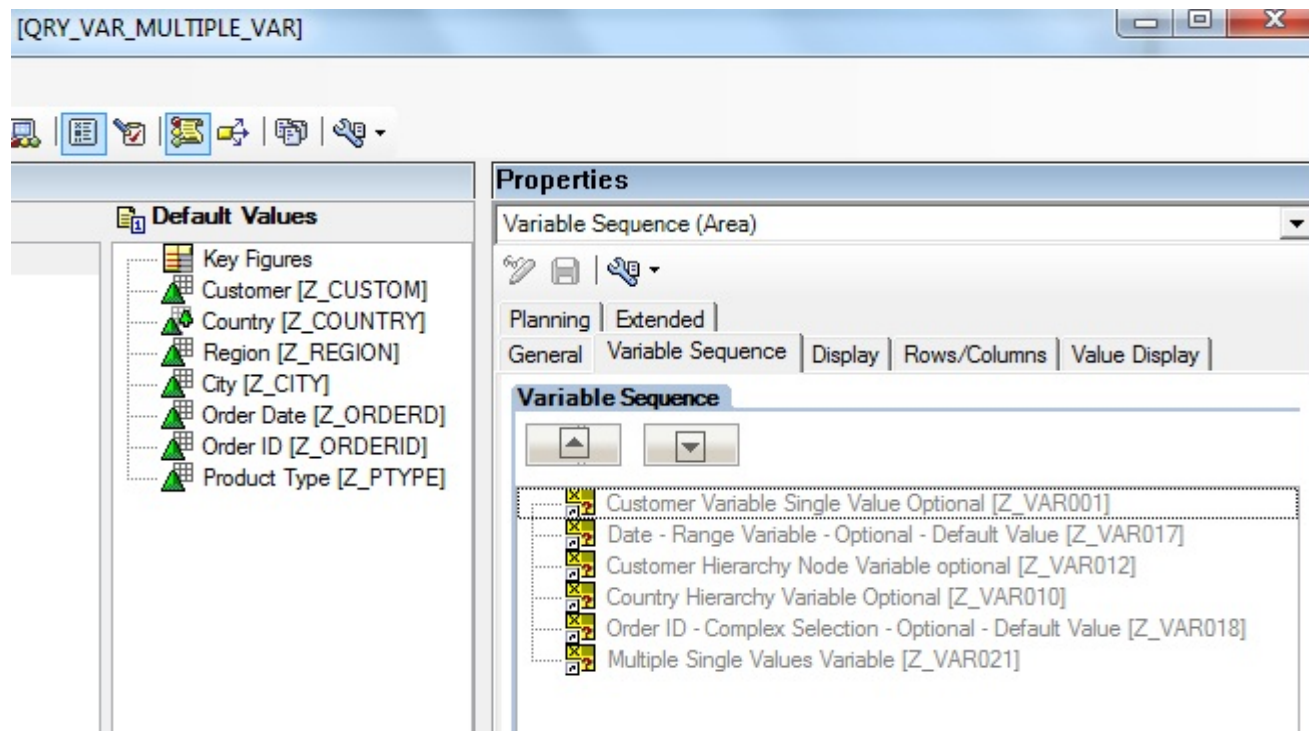


SAP Crystal Reports for Enterprise

Prompt Re-ordering Facelift

The SAP Crystal Reports for Enterprise designer has always been capable of reordering parameters. The introduction of SAP BW support meant having to respect the variable sequence order for Bex Queries containing variables.

Report designers wanted the flexibility of having a choice to always respect the order at refresh time (picking up changes if necessary) or to ignore it in favour of a custom order



Variable sequence order in the BEx Query Designer

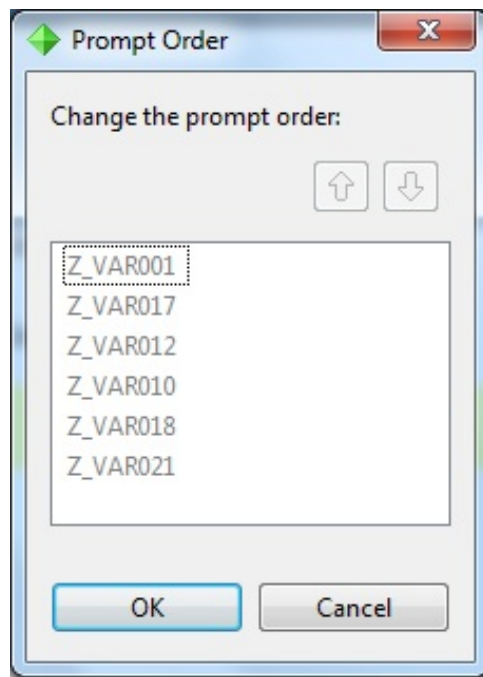
SAP Crystal Reports for Enterprise

Prompt Re-ordering Facelift

BI4.1 (until SP02) did not allow such customization to be possible. Order was determined by the datasource when the report is executed (verified)

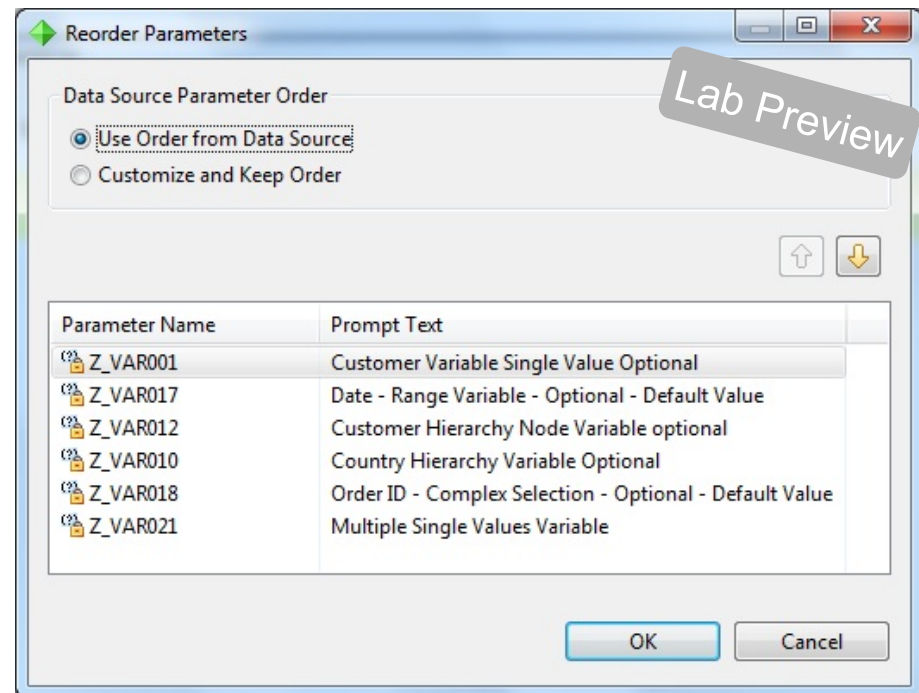
Design Thinking applied with customer involvement to “re-invent” the reordering dialogue for datasources that have datasource-level prompts

BEFORE



BI4.1 SP02 – Bex Query variable re-ordering is disabled

CURRENT



BI4.1 SP03 – Dialogue updated to allow re-ordering

SAP Crystal Reports for Enterprise

Prompt Re-ordering Facelift

Behaviour / Functionality of the Feature

Customized prompt reordering is done per report

- The radio button to “Customize and Keep Order” is a setting to be configured for each report
- The Bex query does not get modified – only the ordering information is ignored at runtime
- Setting the radio button back to “Use Order from Data Source” will reset the prompt order

Default behaviour is to respect the Bex query sequence

Re-ordering of datasource parameters is also applicable to Universe prompts

Report parameters can be re-ordered within the ordering of the datasource parameters (Previously, report parameters could only be before or after the set of datasource parameters)



BI Platform

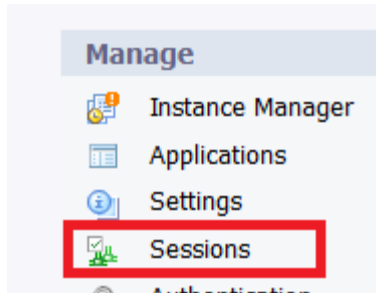
BI4.1 SP03, What's New



New functionality for 4.1 SP03 BI Platform

- **Ability to terminate session**
- **Direct link to Folder**
- **LCM removal of derby database**
- **Multi Tenancy Tool support for multi source universe.**

Session Management



New with BI4.1 SP3, the administrator can manage the sessions of the system's users in the CMC -> Sessions page.

Central listing allows Administrators to forcefully terminate a session or multiple sessions

Central Management Console

The screenshot displays the 'Sessions' page in the SAP Central Management Console. At the top, there is a 'Sessions' dropdown menu and a 'Refresh' button. Below this, a message states 'There are 2 sessions'. A table lists the sessions:

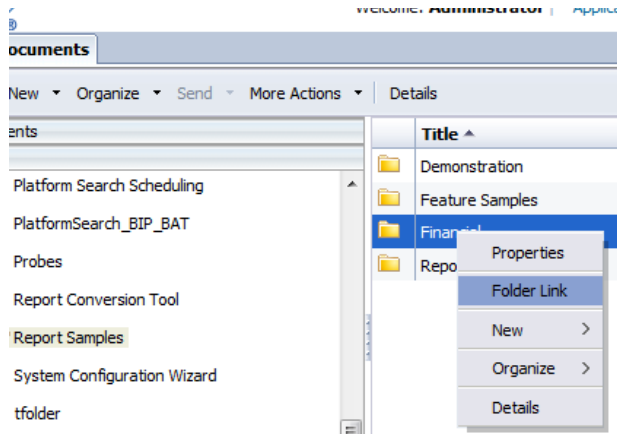
User Name	Session Count	Last Logon Time	First Logon Time ^
secEnterprise:Administrator	1	Jan 14, 2014 1:54:00 PM	Jan 14, 2014 1:54:00 PM
secEnterprise:test	1	Jan 14, 2014 2:04:03 PM	Jan 14, 2014 2:04:03 PM

Below the table, a detailed view of a session is shown. It includes a table with the following data:

User Name	ID	CMS Name	Client Session	Last Logon Time
secEnterprise:test	AUYMea27URBAo3isgQ577WU	AutoChain-vm18.dhcp.pgdev.sap	BI launch pad	Jan 14, 2014 2:04 PM

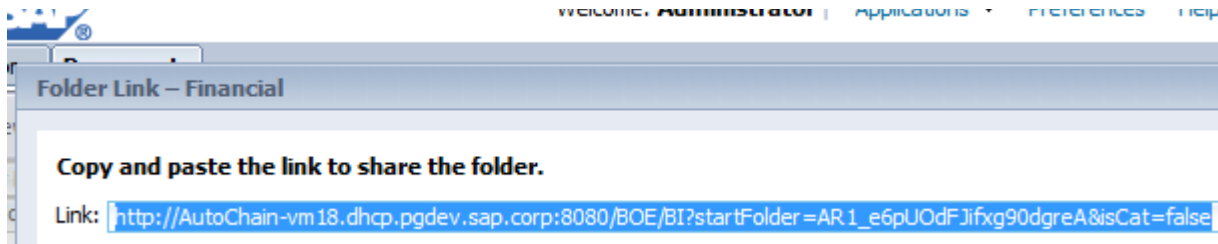
An 'End Session' button is visible over the detailed view table.

Direct to folder link



New right click menu for all folders allows user to get direct folder link.

Link can be shared with other users which will take them directly to a specific folder in BI Launchpad. This is similar to the OpenDocument function, with folders instead of individual documents.



LCM removal of derby database

- **LCM Overrides are now stored in CMS database**
- **Without dependency on a single derby DB, will allow clustering & failover of LCM service**

- *Clustering & failover still depend on a number of fixes which may or may not be complete by the time SP03 ships.

Multi Tenancy Tool support for multi source universe

- **Multitenancy tool is described here:**
<http://scn.sap.com/community/bi-platform/blog/2013/06/18/overview-of-sap-bi-4x-multitenancy-management-tool>
- **With improved SDK support in semantic layer, the tool now supports multi source universes.**



Platform Support

BI4.1 SP03, What's New

BI4.1 SP03 – Sharepoint 2013 Support

With BI4.1 SP03, WebIntelligence is fully supported for Sharepoint 2013.

This removes the limitation that BI4.1 cannot be deployed against Sharepoint 2013

Key Links

- sap.com/upgradebi
- sap.com/learnbi
- sap.com/bivirtualization
- sap.com/bisizing
- service.sap.com/rkt-bo-bi for technical delta implementation knowledge
- service.sap.com/roadmap
- [How to Select the Right BI Tool for Your Environment](#)
- [SAP's Release Strategy for Major Releases of SAP BusinessObjects BI](#)
- [SAP BusinessObjects BI 4.1 What's New L2](#)



Thank you

SAP BI GTM

© 2014 SAP AG or an SAP affiliate company. All rights reserved.

No part of this publication may be reproduced or transmitted in any form or for any purpose without the express permission of SAP AG or an SAP affiliate company.

SAP and other SAP products and services mentioned herein as well as their respective logos are trademarks or registered trademarks of SAP AG (or an SAP affiliate company) in Germany and other countries. Please see <http://global12.sap.com/corporate-en/legal/copyright/index.epx> for additional trademark information and notices.

Some software products marketed by SAP AG and its distributors contain proprietary software components of other software vendors.

National product specifications may vary.

These materials are provided by SAP AG or an SAP affiliate company for informational purposes only, without representation or warranty of any kind, and SAP AG or its affiliated companies shall not be liable for errors or omissions with respect to the materials. The only warranties for SAP AG or SAP affiliate company products and services are those that are set forth in the express warranty statements accompanying such products and services, if any. Nothing herein should be construed as constituting an additional warranty.

In particular, SAP AG or its affiliated companies have no obligation to pursue any course of business outlined in this document or any related presentation, or to develop or release any functionality mentioned therein. This document, or any related presentation, and SAP AG's or its affiliated companies' strategy and possible future developments, products, and/or platform directions and functionality are all subject to change and may be changed by SAP AG or its affiliated companies at any time for any reason without notice. The information in this document is not a commitment, promise, or legal obligation to deliver any material, code, or functionality. All forward-looking statements are subject to various risks and uncertainties that could cause actual results to differ materially from expectations. Readers are cautioned not to place undue reliance on these forward-looking statements, which speak only as of their dates, and they should not be relied upon in making purchasing decisions.